

[Supplementary Material] Online Discriminative Dictionary Learning for Visual Tracking

Fan Yang[†], Zhuolin Jiang[§] and Larry S. Davis[†]
[†]University of Maryland College Park, MD, USA

[§]Noah's Ark Lab, Huawei Technologies

{fyang, lsd}@umiacs.umd.edu, zhuolin.jiang@huawei.com

1. Experimental results

In the supplementary material, we present the qualitative and quantitative comparisons of our tracker with the trackers using the reconstruction error only, using the linear regression loss only, without online update and with blind update, which are denoted as ε_{rec} , ε_{cls} , ODDL- and ODDL+, in Figure 1 and Figure 2. We also present a quantitative comparison of our tracker with the state-of-the-art trackers introduced in [5, 4, 8, 7, 6, 1, 3, 2] in Figure 3.

References

- [1] A. Adam, E. Rivlin, and I. Shimshoni. Robust fragments-based tracking using the integral histogram. In *CVPR*, pages 798–805, 2006. 1
- [2] B. Babenko, M.-H. Yang, and S. Belongie. Visual tracking with online multiple instance learning. In *CVPR*, pages 983–990, 2009. 1
- [3] J. Kwon and K. M. Lee. Visual tracking decomposition. In *CVPR*, 2010. 1
- [4] B. Liu, J. Huang, L. Yang, and C. A. Kulikowski. Robust tracking using local sparse appearance model and k-selection. In *CVPR*, pages 1313–1320, 2011. 1
- [5] X. Mei and H. Ling. Robust visual tracking using L1 minimization. In *ICCV*, pages 1436–1443, 2009. 1
- [6] D. A. Ross, J. Lim, R.-S. Lin, and M.-H. Yang. Incremental learning for robust visual tracking. *IJCV*, 77(1):125–141, 2008. 1
- [7] Q. Wang, F. Chen, W. Xu, and M.-H. Yang. Online discriminative object tracking with local sparse representation. In *WACV*, pages 425–432, 2012. 1
- [8] T. Zhang, B. Ghanem, S. Liu, and N. Ahuja. Robust visual tracking via multi-task sparse learning. In *CVPR*, pages 2042–2049, 2012. 1

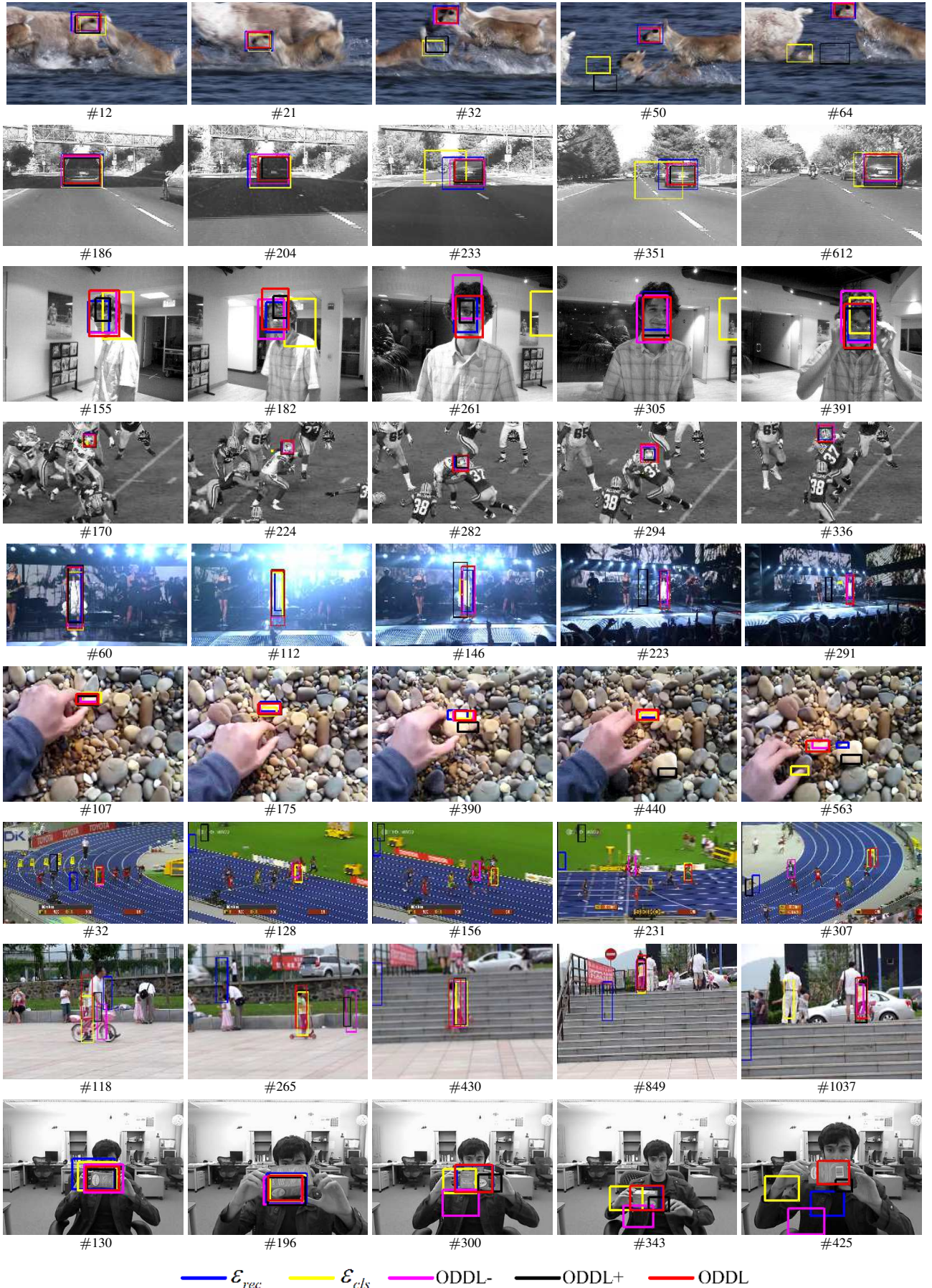


Figure 1. Tracking results using our tracker and its four variants (\mathcal{E}_{rec} , \mathcal{E}_{cls} , ODDL- and ODDL+) on sequences *animal*, *car4*, *david*, *football*, *singer*, *stone*, *bolt*, *girl* and *twinnings*.

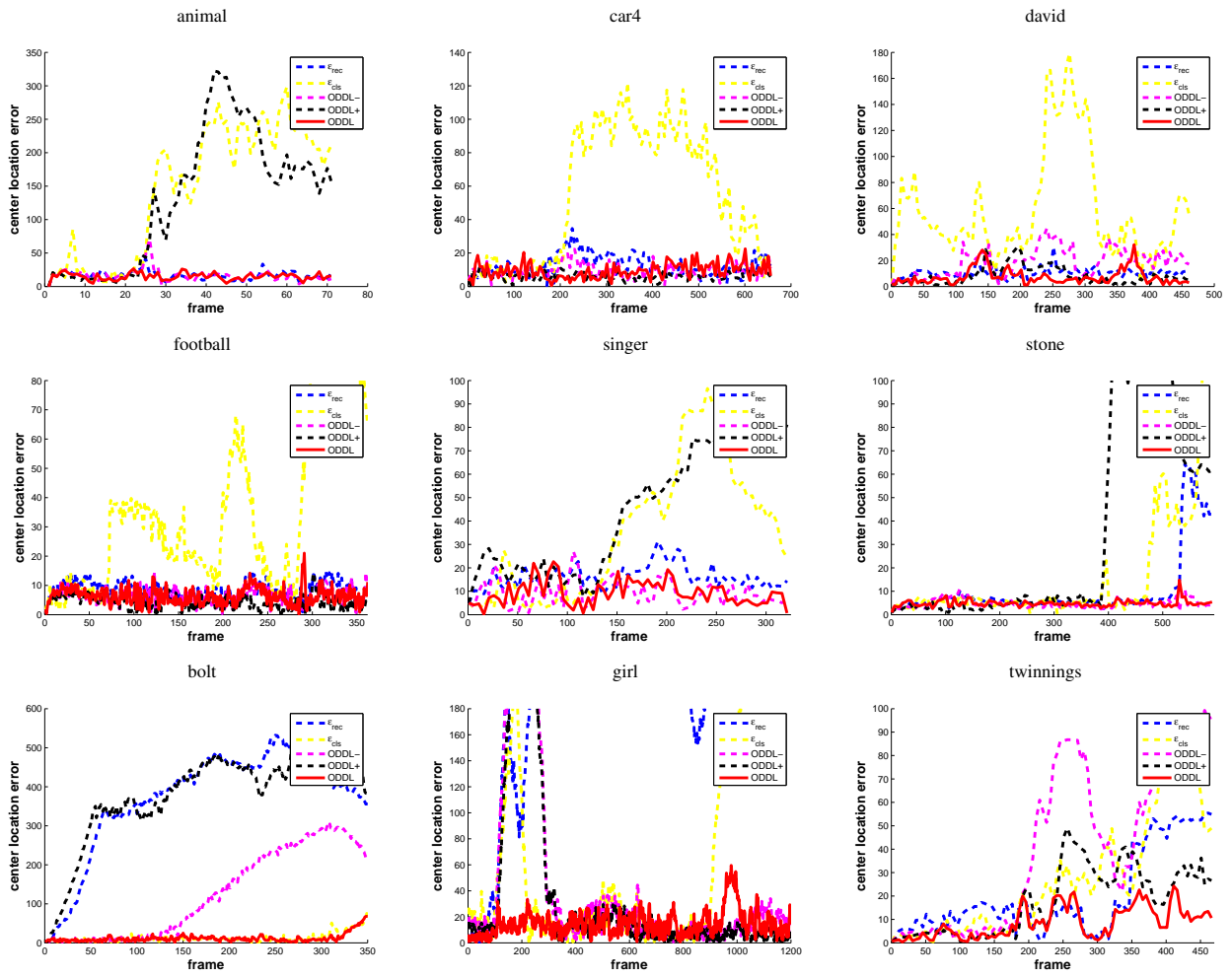


Figure 2. Plots of center location error on all testing sequences using our tracker and trackers using the reconstruction error only (ϵ_{rec}), using the linear regression loss only (ϵ_{cls}), without online update (ODDL-) and with blind update (ODDL+).

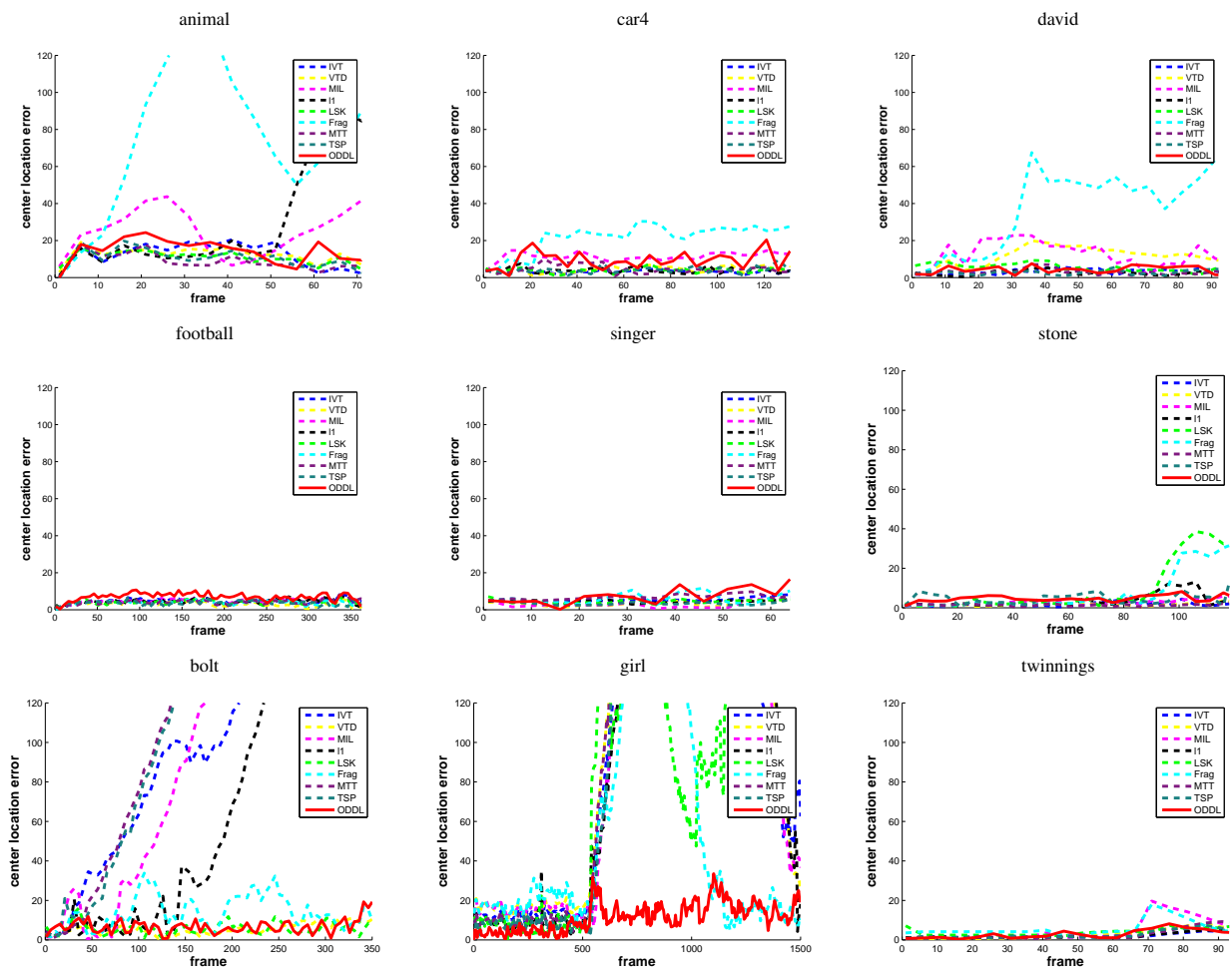


Figure 3. Plots of center location error on all testing sequences using our tracker and 8 compared trackers.