
Modeling Learner Engagement in MOOCs using Probabilistic Soft Logic

Arti Ramesh, Dan Goldwasser, Bert Huang, Hal Daumé III, Lise Getoor
Department of Computer Science, University of Maryland, MD, USA
{artir, bert, hal, getoor}@cs.umd.edu, goldwas1@umiacs.umd.edu

Abstract

Massive open online courses (MOOCs) attract a large number of student registrations, but recent studies have shown that only a small fraction of these students complete their courses. Student dropouts are thus a major deterrent for the growth and success of MOOCs. We believe that understanding student engagement as a course progresses is essential for minimizing dropout rates. Formally defining student engagement in an online setting is challenging. In this paper, we leverage activity (such as posting in discussion forums, timely submission of assignments, etc.), linguistic features from forum content and structural features from forum interaction to identify two different forms of student engagement (passive and active) in MOOCs. We use *probabilistic soft logic* (PSL) to model student engagement by capturing domain knowledge about student interactions and performance. We test our models on MOOC data from Coursera and demonstrate that modeling engagement is helpful in predicting student performance.

1 Introduction

Massive open online courses (MOOCs) often attract up to hundreds of thousands of registrants, but only a small fraction of these successfully complete their courses. Even of those students who declare at the start of a course an intent to complete, 75% do not (according to a recent Coursera study [1]). Maintaining and cultivating student engagement is a prerequisite for MOOCs to have broad educational impact.

Unlike regular courses in which students engage with class materials in a structured and monitored way, and instructors directly observe student behavior and obtain feedback, the distant nature and the sheer size of an online course require new approaches for providing student feedback and guiding instructor intervention. MOOCs provide a tantalizing opportunity for analyzing large-scale online interaction and behavioral data to improve student engagement, outcomes, and overall experience.

To date, this opportunity is purely speculative: little work has truly exploited content (language), structure (social interactions), and outcome data. One significant technical challenge is that to do so requires the ability to combine language analysis of forum posts with graph analysis over very large networks of entities (students, instructors, topics, assignments, quizzes, etc.) to perform predictive modeling.

We follow the observation that quantifying and measuring *engagement* is key to understanding learner participation in the course. In MOOCs particularly, there are different notions of student engagement. Learners often engage in different aspects of the course throughout its duration. For example, some students engage in the social aspects of the online community by posting in forums, asking and answering questions; while others only watch lectures and take quizzes without interacting with the community.

Unlike classroom courses where engagement can be observed in person, it is challenging to recognize and measure engagement in an online environment. Some indications of learner engagement include online activity by the learner on the course website, interactions with other learners/staff on the discussion forums, completion of quizzes/assignments *and* language used by the learner in posts. These differences make the problem of measuring learner engagement difficult.

In this work, we use probabilistic soft logic (PSL), a recently introduced formalism for rich, graphical models over structured domains, which supports efficient inference and parameter estimation [1]. PSL provides an easy means to represent and combine the behavioral, linguistic and structural features in a concise manner. We propose a PSL model that uses learner behavioral features to distinguish between forms of engagement learners display in the course—passive or active—and use the above model to predict whether learners earned a statement of accomplishment from the course (learner performance). Our model reasons about types of learner engagement by formulating it as a latent variable that underlies learners’ behavior. Our empirical evaluation on a Coursera course dataset indicates that modeling engagement improves learner performance prediction. We also explore potential ways in which engagement predictions can be used to reason about other aspects of online course participation by observing the forum content posted by engaged and disengaged learners.

2 Related Work

Student engagement is known to be a significant factor in success of student learning [2], but there is still limited work studying learner engagement in MOOCs. Our work is closest to that of Kizilcec et al., who attempt to understand learner disengagement in MOOCs [4]. In their work (based on three online MOOC courses), the authors identify four prototypical trajectories of engagement and describe the set of features for comparing the different trajectories. Their work clusters user trajectories and identifies them as engaged/disengaged based on cluster membership. Our work differs from the above work in that we view types of engagement as a latent variables and learn to differentiate among the engagement types from data. We use learner performance scores to train the model and use this model to predict whether the learner earned a statement of accomplishment in the online course. We model engagement more explicitly and show that it helps in predicting learner performance.

Prior work [2, 3] has studied the relationship between student engagement and academic performance for traditional classroom courses; they identify several metrics for user engagement (such as student-faculty interaction, level of academic challenge). Carini et al. demonstrate quantitatively that though most engagement metrics are positively correlated to performance, the relationships in many cases can be weak [3]. Our work borrows ideas from Kuh et al. [2] and Carini et al. [3] and adapts these to an online setting. MOOCs are fundamentally different from traditional courses in, e.g., the number of students enrolled, student-faculty interactions, methods of assessment, and lack of personal interaction. In this work, we identify metrics for learner engagement tailored for online courses and analyze how these engagement metrics relate to performance.

3 Problem Statement

Decreasing the student dropout rate is arguably the biggest challenge faced by online education providers conducting online courses. Recent studies [2] show that only about 5 percent of students who register for the course eventually end up completing it and obtaining a grade in it. This proportion is also consistent with the data we used (collected from the “Surviving Disruptive Technologies” course, described in Section 6), in which only 5.11% of the students completed the course.

In this work we take a step towards helping educators in this goal using data driven methods. We analyze the learners’ online behavior in an attempt to identify how they engage with the course materials, and how this engagement can help predict whether they receive a statement of accomplishment in the course. We follow the intuition that the level and type of student engagement within the course provides good indication, and we distinguish between different types of engagement and how they relate to different activity patterns. For example, we find that learners who do not take quizzes during lectures still follow forum discussion, indicating a passive form of engagement. For these users engagement is typically manifested as viewing and voting forum activities. In this paper, we

formalize this intuition, and construct a probabilistic model capturing the latent engagement level of students.

4 Learner Engagement in MOOCs

Studies of student engagement in classroom settings are based upon factors such as attendance, participation in discussions and grades. Many of these factors are not directly observable in an online course, posing difficulties in assessing learner engagement. So it is essential to interpret online behavioral patterns for inferring engagement in MOOCs.

Since student responses are not directly observed in an online course, engagement cannot be easily determined, but rather it can be inferred by interpreting behavioral patterns which indicate student's level and type of involvement. In order to model learner engagement we first identify the relevant online behavioral activities of learners—1) *Posting* on discussion forums, 2) *Subscribing/viewing/voting* on content posted by others, 3) *Following* course material, and 4) *Completing assessments* associated with the course.

Learners posting actively in the discussion forums can act as a good indicator of learner engagement, since forums are the primarily observable means of interaction in a MOOC setting. Learners can use the forum posts to convey the satisfaction or dissatisfaction with course and possible provide indications of their interest in the class and motivation to complete it. A finer analysis of the content of the posts is essential to conclude whether the learner is engaged. In order to use this information, in addition to the behavioral indicators above, we include linguistic indicators describing the posts content that could provide indication of the learner's engagement/disengagement. We use an automated tool (OpinionFinder [6]) to annotate the forum posts with two types of labels: subjectivity of content in posts and sentiment polarity of post content.

Figure 1 demonstrates the importance of capturing this information. The figure depicts the variation of subjective expressions in forum content with the reaction these posts attract (measured in votes). The increasing trend of votes with increase in subjective expressions is indicative of the fact that posts containing subjective expressions invite more attention and trigger engagement.

Based on these two types of signals, we categorize learner engagement into the following types:

Active Engagement Assigned to learners who show explicit signs of engagement by posting on the discussion forums, submitting quizzes and assessments. These signs require an active involvement from the learner.

Passive Engagement Assigned to learners who show more implicit signs of engagement by viewing, subscribing or voting on posts/comments on discussion forums and views lectures. These users typically do not make an active effort to participate.

Disengaged Learners that show signs of getting disengaged from the course, either by posting text that indicate their disengagement or show a significant decrease in posting, viewing, voting, and assessment submitting activity.

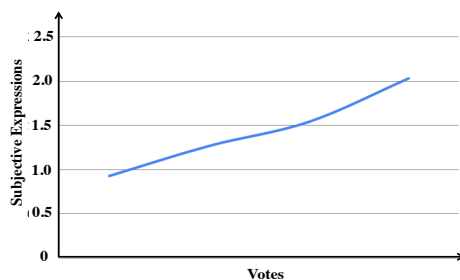


Figure 1: Subjective expressions vs. votes in Disruptive Technologies course

We are interested in modeling engagement and reasoning about which form(s) of engagement are strong indicators of performance.

5 Modeling Learner Engagement in PSL

In this section, we provide a brief description of PSL. Additional details about PSL are available in [1]. We also discuss the various features (behavioral, linguistic and structural), which learners exhibit online while attending these courses. We then describe the PSL models to model student behavior which capture these features. We begin with a simple model which predicts performance using only behavioral, linguistic, structural and temporal features and then increase its complexity by including forms of engagement and disengagement as a latent feature.

5.1 Probabilistic Soft Logic

Probabilistic soft logic (PSL) [1] is a framework for collective, probabilistic reasoning in relational domains. PSL uses syntax based on first-order logic as a templating language for continuous graphical models over random variables representing soft truth values. Like other statistical relational learning methods [5], PSL uses weighted rules to model the dependencies in a domain. However, one distinguishing aspect is that PSL uses continuous variables to represent truth values, relaxing Boolean truth values to the interval $[0,1]$. Triangular norms, which are continuous relaxations of logical connectives AND and OR, are used to combine the atoms in the first-order clauses. As a result of the soft formulation and the triangular norms, the underlying probabilistic model is a *hinge-loss Markov random field* (HL-MRF) [7]. Inference in HL-MRFs is a convex optimization problem, which makes working with PSL very efficient in comparison to relational modeling tools that use discrete representations.

HL-MRFs admit various learning algorithms for fully-supervised training data, and are amenable to point-estimate “hard” expectation maximization for partially-supervised data with latent variables [9]. In our model, we exploit this to represent student engagement as a latent variable.

5.2 Features

Our PSL model is built on a foundation of observable features from the data. In the following, we detail the various features we collect from the data. Following the first-order logic based syntax of PSL, we describe these features as logical predicates.

Behavioral Features Our behavioral features are attributes that the learner exhibits while on the MOOC website. In our models, we consider two types of behavioral features: aggregate and non-aggregate. The aggregate features give the overall behavioral metrics, while the non-aggregate features are at the instance level. The predicates *postActivity*(USER) and *voteActivity*(USER) capture how active the user is in the forums. These are calculated for each user by assessing whether the user posts more than the average number of posts generated by all users. Predicate *reputation*(USER) represents whether the overall reputation of a user is above average. The aggregate behavioral predicates take Boolean values. Predicate *posts*(USER, POST) and *votes*(USER, POST) capture an instance-level log of users posting and voting on the discussion forums. The predicates *posts* and *votes* take value 1 if the USER posts or votes on POST. Predicate *upvote*(POST) is true if the post has positive votes and false otherwise, and predicate *downvote*(POST) is true if a post has been downvoted.

Linguistic Features The subjectivity and polarity scores of the posts are from *OpinionFinder* [6], represented by *subjective*(POST) and *polarity*(POST) respectively. Both these predicates are calculated by normalizing the number of subjective/objective tags and positive and negative polarity tags marked by opinion finder. These predicates take values $[0,1]$.

Temporal Features The course is divided into the following time periods: one time period before the course starts and three time periods during the course. The time period splits during the course are constructed according to the deadlines in the course—one before the first assignment, second and third being before and after the midterm respectively. The temporal features *lastQuiz*, *lastLecture*, *lastPost*, *lastView* and *lastVote* capture the time-period in which each last interaction of the user occurred. These features measure to what lengths the user participated in different aspects of the course.

$postActivity(U) \wedge reputation(U) \rightarrow performance(U)$
$voteActivity(U) \wedge reputation(U) \rightarrow performance(U)$
$posts(U, P) \wedge positive(P) \rightarrow performance(U)$
$votes(U, P) \wedge positive(P) \rightarrow performance(U)$
$posts(U, P) \wedge upvote(P) \rightarrow performance(U)$

Table 1: Rules for simple PSL model.

$postActivity(U) \wedge reputation(U) \rightarrow \mathbf{eActive}(U)$
$voteActivity(U) \wedge reputation(U) \rightarrow \mathbf{ePassive}(U)$
$posts(U, P) \wedge positive(P) \rightarrow \mathbf{eActive}(U)$
$votes(U, P) \wedge positive(P) \rightarrow \mathbf{ePassive}(U)$
$posts(U, P) \wedge upvote(P) \rightarrow \mathbf{eActive}(U)$
$posts(U_1, P_1) \wedge posts(U_2, P_2) \wedge \mathbf{eActive}(U_1) \wedge sameThread(P_1, P_2)$ $\rightarrow \mathbf{eActive}(U_2)$
$\mathbf{eActive}(U) \wedge \mathbf{ePassive}(P) \rightarrow performance(U)$

Table 2: Rules for PSL model with latent variables, latent variables highlighted in bold.

Structural Features We also include structural features induced by forum structure. These are given by *sameThread*(POST_1, POST_2) and *sameForum*(THREAD_1, THREAD_2) to capture posts in the same thread and threads in the same forum respectively. Including these relationships allows for our model to capture structural phenomena in interactions and how it can affect student engagement and performance.

5.3 PSL Models

We now construct two different PSL models for predicting learner performance in a MOOC setting—1) a simple model that directly infers learner performance from observable features and 2) a latent variable model that infers student engagement as a hidden variable to predict learner performance.

In our simple PSL model, we model performance of learners by using the observable behavioral features exhibited by the learner, linguistic features corresponding to the content of the post and structural features derived from forum interaction. Meaningful combinations of one or more observable behavioral features described in Section 5.2 are used to predict *performance*. Table 1 gives a subset of rules used in this model (*U* and *P* in tables 1 and 2 refer to USER and POST respectively). As can be seen, the observable features directly imply performance of the learner in the simple model.

We can enhance this type of model by adding latent variables that have semantic meaning but can not be directly measured from the data. We treat learner engagement as a latent variable and associate the various observed features to one or more forms of engagement and use the engagement variables to predict learner performance. The latent variables in this model are represented by predicates *engagement_active*, *engagement_passive* and *disengagement*. In this model, some of the observable features—*postActivity*, *voteActivity*, *viewActivity* are used to classify learners into one or more forms of engagement or disengagement. Then the engagement predicates—*engagement_active*, *engagement_passive* and *disengagement* conjuncted with features that were not used in classifying user engagement like *reputation* are then used to predict learner performance. For example, in Table 2, conjunction of *postActivity* and *reputation* implies *engagement_active*; conjunction of *voteActivity* and *reputation* implies *engagement_passive*; while *engagement_active* and *engagement_passive* implies *performance*. Note that *engagement_active* and *engagement_passive* are represented by *eActive* and *ePassive* in the table. The weights of the model are learned by performing hard expectation-maximization with performance as a target variable. Learning a model with latent engagement gives information about which forms of engagement are good indicators of learner performance. The resulting model results in better predictive performance and can provide more insight into MOOC user behavior than a simpler model.

6 Experimental Results

We evaluate our models using data from a Coursera course, *Surviving Disruptive Technologies*, taught by Professor Hank Lucas. The seven-week course had 1665 users participating in the forums and 826 users completing the course with a nonzero score.

We conduct experiments that help us answer the following questions about learner engagement: (1) How effective are our models in predicting performance? (2) What are the key factors influencing

learner performance in an online setting?

To address the first question, we evaluate the performance of our models in predicting learner *performance*. We compute the area under ROC curve (AUC) for our evaluations. We use 10-fold cross-validation in our experiments, leaving out 10% of the data for testing and rest for training phase, where the model weights are learned. We observe that the PSL model with the latent engagement variables performs better at predicting learner performance and also provides more understanding of reasons why the user did not perform. Table 3 shows the AUC values for the PSL models discussed in Section 5.3.

	AUC-PR Pos.	AUC-PR Neg.	AUC-ROC	Kendall
Simple PSL model	0.7393	0.5462	0.6673	0.5815
PSL model with latent variables	0.7492	0.5748	0.6923	0.6033

Table 3: Performance of simple PSL model and PSL model with latent variables.

To address the second question, we examined weights our model learns for the different engagement variables in predicting performance. We see that the rules involving predicates *postActivity*, *voteActivity*, *viewActivity* and *reputation* gain a high weight in the simple learned model. In our second model, we observe that rules involving *engagement_active* predicts performance, while rules containing *disengagement* gain a higher weight in predicting \neg *performance*.

In addition to predicting performance, the engagement variables are helpful in interpreting the different facets of learner participation in the course. Of particular interest is the content of the posts made by learners and how it corresponds to the values predicted by the our model. Table 4 shows some examples of posts made by users and the engagement and performance scores predicted by the model. It is interesting to note that engaged learners post content with negative sentiment on the course, which may be perceived as participating in the course, for example, the first user in the Table 4. While disengaged learners may post similar content with negative sentiment, a change in activity will help discern them from the engaged ones, e.g., the third user in Table 4.

Engaged learner (positive sentiment)	performance = 0.7508 disengagement = 1.0	Prof. Lucas, <i>Thank you for a great course!</i> And thank you Coursera!
Engaged learner (negative sentiment)	performance = 0.8032 disengagement = 1.0	I have also received a 9, the most disappointing thing is that I have only received good or passing comments from my peers, 3 of 5 did not post any comment about my work.
Disengaged Learner (negative sentiment)	performance = 0.5 disengagement = 0.675	<i>I agree completely.</i> I used a lot of time on my assignment and got 7.5. think <i>the evaluation criteria were wrong</i> , it shouldn't be rated on whether you have 3 or 4 innovations in your description but on a subjective measure (which is also flawed). Generally you should pass if it's obvious that you have followed the course and that you have tried to use the theories that the course has(to a certain degree ofc.).
Disengaged Learner (negative sentiment)	performance = 0.327 disengagement = 1.0	The grades I received <i>are ridiculous!</i> One pointed out that the good point in my assignment was my fluency in English!!! Oh God!Another one told me that I used "general knowledge" for asking the questions. Yes, I've tried to use "general knowledge" for applying the theory so that it is useful (and not just a theory!).I've re-read my assignment and I still <i>can't believe in my grade.</i> Is it really fair?.
Auditor	performance = 0.0 disengagement = 1.0	This has been <i>an otherwise fantastic course.</i> Too bad the potential for success is so heavily weighted on two assignments.

Table 4: Relevant forum content posted by users assigned different engagement labels by our model.

7 Discussion

In this work, we take a first step towards understanding student engagement and its impact on student performance using data-driven methods. We formalize, using PSL, our intuition that student engagement can be modeled as a complex interaction of behavioral, linguistic and social cues, and we show that our model can construct an interpretation for the latent engagement types from data, without supervision, based on their impact on final performance.

In addition to our empirical results, we provide some qualitative results of possible uses of the learned engagement-classes. While not comprehensive, it demonstrates the direction of our future work—facilitating instructors' intervention when needed, based on identifying user groups and the sentiment emerging from their forum content.

Acknowledgements This work is supported by National Science Foundation under Grant No. CCF0937094. Any opinions, findings, and conclusions or recommendations expressed in this material are those of the author(s) and do not necessarily reflect the views of the National Science Foundation.

References

- [1] Broecheler, M., Mihalkova, L. & Getoor, L., Probabilistic Soft Logic. In *Conference on Uncertainty in Artificial Intelligence*, 2010.
- [2] Kuh, G. D., What we're learning about student engagement from NSSE: Benchmarks for effective educational practices. *Change: The Magazine of Higher Learning*, 2003.
- [3] Carini, R. M., Kuh, G. D. & Klein, S. P., Student engagement and student learning: Testing the linkages. *Research in Higher Education*, 47(1), 1-32, 2006.
- [4] Kizilcec, R. F., Piech, C. & Schneider, E., Deconstructing disengagement: analyzing learner subpopulations in massive open online courses. In *International Conference on Learning Analytics and Knowledge*, 2013.
- [5] Getoor, L. & Tasker, B., Introduction to Statistical Relational Learning. *The MIT Press*, 2007.
- [6] Wilson, T., Hoffmann, P., Somasundaran, S., Kessler, J., Wiebe, J., Choi, Y., Cardie, C., Riloff, E., & Patwardhan, S., OpinionFinder: A System for Subjectivity Analysis. In *Proceedings of Human Language Technologies Conference/Conference on Empirical Methods in Natural Language Processing (HLT/EMNLP 2005), Companion Volume (software demonstration)*, 2005.
- [7] Bach, S. H., Huang, B., London, B. & Getoor, L., Hinge-loss Markov Random Fields: Convex Inference for Structured Prediction. In *Uncertainty in Artificial Intelligence*, 2013.
- [8] Bach, S. H., Broecheler, M., Getoor, L. & O'Leary, D. P., Scaling MPE Inference for Constrained Continuous Markov Random Fields. In *Advances in Neural Information Processing Systems (NIPS) pages 2663–2671*, 2012.
- [9] Bach, S. H., Huang, B. & Getoor, L., Learning Latent Groups with Hinge-loss Markov Random Fields. In *Infering: ICML Workshop on Interactions between Inference and Learning*, 2013.